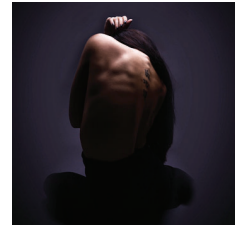


**ES Productions**  
**Stegosaurus**  
 by Ersi Niaoti



**The world of Stegosaurus is one of exposed bones, black coffee, cigarettes and self-loathing. Yet there is hope**

**Stegosaurus**, by Greek playwright **Ersi Niaoti**, reveals the emotional and physical damage that eating disorders cause and the impact of depression. But it's also about the resilience of the human spirit and the complexities of negotiating modern life. **Stegosaurus** mixes compelling drama with humour and insights into society and the strength that the enduring love of family can provide.

Making her Edinburgh Fringe debut Greek actor **Elpida Stathatou** lends the one-woman show's unnamed character a sense of true poignancy. She says: 'When I read the script I immediately thought that this is a play that matters, something I want to do, a story I want to share. We meet a woman who swears she will do anything to make herself better, but the eating disorders are like an addiction and she is soon dragged back into a spiral of self-destruction. Despite this, there is hope.'

Stegosaurus opens a window on the thoughts and feelings of a divorced woman of 30 whose most profound relationship appears to be with food. Her sexual encounters are bleak and the normalities of human existence are diminished. For most of the time her illness eclipses all prospect of everyday contentedness.

**Stegosaurus** throws light on the lie told by Hollywood images where bulimia is easy and without consequences. Here is a woman who lurches from semi-starvation to binging, who puts herself through pain but feels a false comfort in 'cleansing'. Amidst the chaos the audience glimpses something else, the compassionate love of the woman's parents and the possibility that it is even more tenacious than the eating disorders. Whether it brings redemption, or merely respite, remains intentionally unclear – just one of many questions the audience is left to ponder.

**A mordant monologue' Stage**

**'Effectively portraying the delusion and pain inherent in the character'**  
*TheReviewsHub.com*

**Listings Information**

Venue	C royale, Royal Society of Edinburgh, 22 George Street, EH2 2PQ, venue 6
Dates	2-19 Aug
Time	14:45 (1h00)
Ticket prices	£8.50-£10.50 / concessions £6.50-£8.50
C venues box office	0845 260 1234 / <a href="http://www.CtheFestival.com/2017/stegosaurus">www.CtheFestival.com/2017/stegosaurus</a>
Fringe box office	0131 226 0000 / <a href="http://www.edfringe.com">www.edfringe.com</a>

**C venues**

vibrant vivacious variety

general manager  
 Shannon Steele  
 artistic director  
 Hartley T A Kemp

year round administration  
**C venues London**  
 5 Alexandra Mansions  
 Chichele Road  
 London NW2 3AS

during the Fringe in August  
**C venues Edinburgh**  
 Press office at C royale  
 22 George Street  
 Ticket collection at any C venue

press office tel 0845 260 1060  
 fax 0845 260 1061  
 box office tel 0845 260 1234

email [press@Cvenues.com](mailto:press@Cvenues.com)  
[www.Cvenues.com](http://www.Cvenues.com)